

File Name: bt phone user manual.pdf

Size: 2243 KB

Type: PDF, ePub, eBook

Category: Book

Uploaded: 14 May 2019, 17:48 PM

Rating: 4.6/5 from 772 votes.

Status: AVAILABLE

Last checked: 9 Minutes ago!

In order to read or download bt phone user manual ebook, you need to create a FREE account.

[Download Now!](#)

eBook includes PDF, ePub and Kindle version

[Register a free 1 month Trial Account.](#)

[Download as many books as you like \(Personal use\)](#)

[Cancel the membership at any time if not satisfied.](#)

[Join Over 80000 Happy Readers](#)

Book Descriptions:

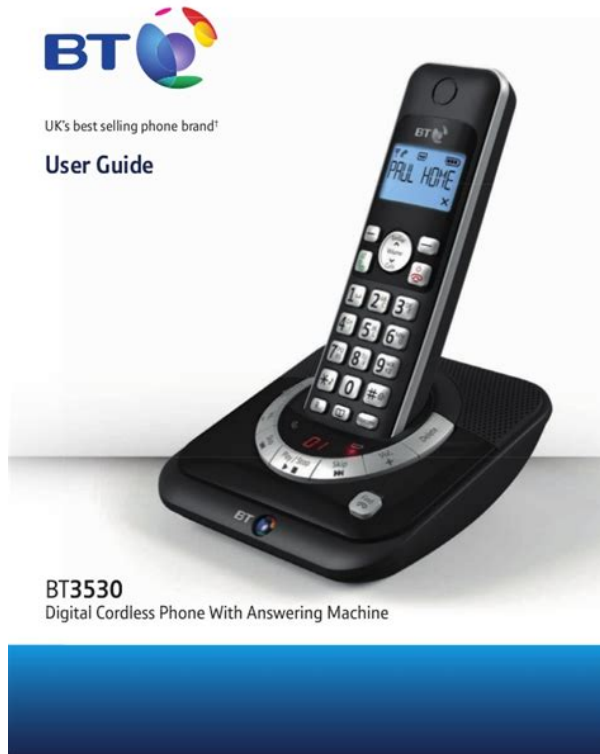
We have made it easy for you to find a PDF Ebooks without any digging. And by having access to our ebooks online or by storing it on your computer, you have convenient answers with bt phone user manual . To get started finding bt phone user manual , you are right to find our website which has a comprehensive collection of manuals listed.

Our library is the biggest of these that have literally hundreds of thousands of different products represented.



Book Descriptions:

bt phone user manual



Simply click to download the most relevant PDFs for your BT phone. Simply click to download the most relevant PDFs for your BT phone. See our ranges, reviews and guides British Telecommunications Public Limited Company is acting as a credit broker for PayPal Credit. PayPal Credit is subject to status, terms and conditions apply. They also let you share pages with social media sites. Telephone headsets are a must for businesses large and small, increasing productivity and efficiency whilst making day to day tasks easier for staff. Be it an ear defender or a ruggedised telephone, you will find it here. USB Headsets, Speakerphone and Webcams can be found here. Certified for Teams, compatible with GoToMeeting, Zoom and more We value our customers and value your feedback so if you have any comments please get in touch with us. You can also find out more about us and some of our services and clients. Thank You. In standby, press and hold to dial BT 1571. When answer machine message playing, press to replay the current message, or press twice to skip backward to the previous message. Will appear if you're on, or starting, a call. Shows when a new missed call has been received. Shows when you've set an alarm clock. Also used during the registration process. The home screen will display the icon if the ringer is off. Find handset Paging If you get an incoming call while you're paging a handset, You can ring a handset to help. You will hear a confirmation tone. The first entry will be displayed. Select by pressing 2. Press until DELETE ALL is displayed and press 3. The Calls list can hold numbers up to 24 digits and names up to 12 characters. You will hear a confirmation tone. The default Set the handset ringtone for external ringtone is Melody 1 and the internal ringtone is external or internal calls Melody 2. 1. Press, scroll to HS SETTINGS and press 2. You will hear a confirmation tone. You will hear a confirmation tone. However, if you purchase an. <http://acmswellness.com/MyFiles/db2-manuals-download.xml>

- **bt phone user manual, bt relate 250 phone user manual, bt telephone user manuals, bt phone user guides, bt studio phone user manual, bt phone 3570 user manual, bt**

4600 phone user manual, bt v8 phone user manual, bt premium phone user manual, bt everyday phone user manual, bt phone user manual bt8600, bt phone users manuals, bt phone user manual pdf, bt phone user manual download, bt phone user manual free, bt phone user manual online.



Billing enquiries Please see the phone number shown on your BT bill. Using an Replacing the handset batteries unauthorised power supply will After a time, you might find that the invalidate your guarantee and may handset batteries run out of charge damage the phone. Never use a dry cloth as this may cause a static shock. Your Everyday Phone has a REN of 1. A total REN of 4 is allowed. If the total REN of 4 is exceeded, the telephones may not ring. International call costs may vary. And by having access to our ebooks online or by storing it on your computer, you have convenient answers with Bt Studio 4100 Plus User Guide. To get started finding Bt Studio 4100 Plus User Guide, you are right to find our website which has a comprehensive collection of manuals listed. Our library is the biggest of these that have literally hundreds of thousands of different products represented. I get my most wanted eBook Many thanks If there is a survey it only takes 5 minutes, try any survey which works for you. CDMA Mobile Phone with RFID and BT Thank you for purchasing the H001. Before using it for the first time, be sure to read the Basic Manual this PDF manual so as After you finish reading this manual, store it and the printed Printed Manuals for the H001 Japanese. The H001 comes with a Basic Manual and an Instruction Manual. For information about basic For detailed information Basic Manual. Instruction Manual. Refer to this English. PDF manual. English version not The following information is also available on the au website. EZweb Access If you have any trouble with your cellphone, please visit the au au Customer. Support Malfunction Diagnosis web site and find out your problem before calling The typeface, fonts, and colors of the texts on the screens shown in this Also, certain icons and the Mind your manners! A cellphone always emits weak radio waves while it is turned on. <http://www.terracell.com.pt/images/db2-on-as400-manual.xml>

BT 6500 USER GUIDE



Nuisance Call Blocking DECT
Cordless Phone.

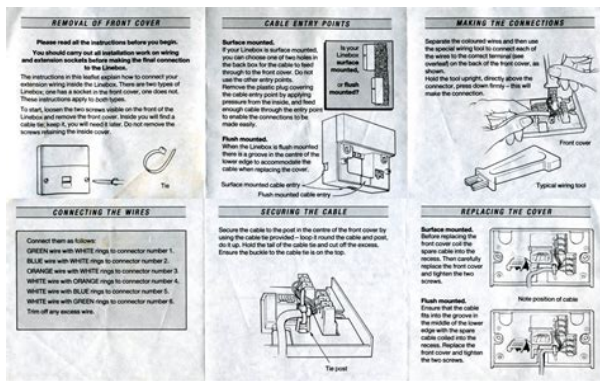


www.telephonesonline.co.uk

Enjoy operation of your cellphone without forgetting to be considerate. Some locations do not allow the use of cellphones. Watch out where you use your cellphone. Turn off the cellphone radio waves may interfere with features. Camera. EZ Navi. EZ FeliCa. Shoot photos and EZ Navi Walk. Passenger Seat Navi. Evacuate Navi and Security Navi allow you. They are all built in. Use the cellphone for Security Setup. Mail. Enjoy using. Television 1Seg. Select either "Safety. Buzzer" or "HOT. DIAL" as reliable. Send mail messages. EZweb. For other useful functions, see page 86. Manner Mode. Answer Memo. Use Manner Mode to turn off the phone. If you cannot answer a call. Answer Memo plays an announcement while the standby screen is displayed. While the standby screen is displayed, press F. Checking Power, Signal. Strength, and Battery Level. Normally leave the phone turned on. The phone needs to be turned on to make and receive calls. Hold down F for at least 2.5 seconds to turn on H001. After a while, H001 turns on with tone and the standby screen is displayed. You cannot talk on the phone. Signal strength is low in some areas, even if the battery level is high. Keep an eye on the battery level. The phone may not function properly if battery level is low. It may cause a traffic accident. Use of the cellphone while driving. Use of the cellphone while driving. Turn off your cellphone or use Drive Mode while driving. Drive Mode. In Drive Mode, the phone will play the message "While the standby screen is displayed, press F. Calls! If you get spam. You can set up mail filters to block spam. The following are the main features your cellphone has. Beware of Onering Calls! A "Onering Call" wangingiri in Japanese rings your phone only. If H001 received a "Onering Call," the icon on the standby screen will change. Disaster Message Board. The Disaster Message Board lets you use EZweb to register. Registering on EZweb and register your current condition. Checking Access. Access. Disaster Message. Board top screen. Information registration. Information screen. Registering a new entry while there are already 10 entries. Cellphone Etiquette. Phone Call. Mind your manners!. 1. Cellphone Basics. Features. 2. Manner Mode and Answer Memo. 3. Checking Power, Signal Strength, and

Battery Level. 3. Never use your cellphone while driving!. 4. Beware of spam and Onering Calls!. 5. Disaster Message Board Service. 6. Contents. Ready Names of Parts. 11. Charging the Battery Pack. 12. Turning On Power. 14. Initial Values. 14. Security Code and Passwords. 15. Selecting English as the Display Language. Display Indicators. 19. Main Menu. 20. Positions of H001. 22. Wide open position features. 23. Initializing Email and EZweb. 24. Looking Up Your Current Phone Number. Changing Your Email Address. 26. Making an International Call. 29. Answering a Call. 30.

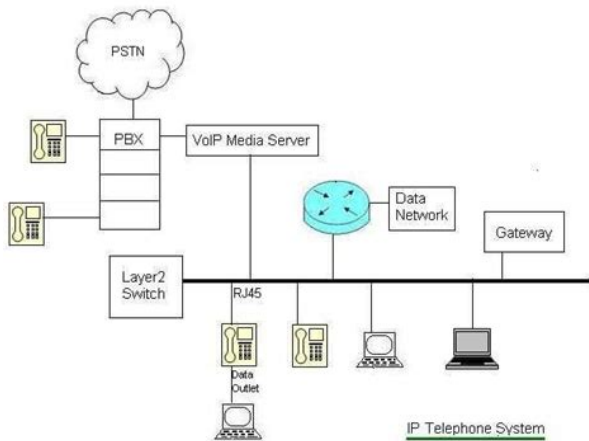
Histories.31. Onering Calls.31. Changing the Ringtone.32. Adjusting the Ringtone Volume.34. Adjusting the Earpiece Volume during a Call.35. Turning On Manner Mode.35. Turning On Answer Memo.36. Playing an Answer Memo.37. Using Overseas Calling to Japan from Overseas.39. Inputting Characters Inputting Pictograms.42. Address Book Editing an Address Book Record.45. Adding Outgoing or Incoming History. Data to the Address Book.46. Dialing from the Address Book.47. Pair Function Making a Phone Call or Sending Mail to a. Pair Partner.49. Mail Using Cmail.51. Creating and Sending Email Messages.52. Reading Received Email Messages.54. Reading an Email Message with an. Attached Photo.55. Replying to a Received Email Message.56. Avoiding Spam.57. Creating and Sending Cmail Messages.58. Reading Received Cmail Messages.60 Shooting a Photo.63. Viewing Photos.64. Attaching a Photo to an Email Message.65. Other Functions Troubleshooting EZweb Displaying the au one Top.67. Bookmarking Sites You Frequently Access Checking Charges.69 EZ Navi Configuring au Media Tuner Initial Settings Exiting au Media Tuner.80. Bluetooth Registering Wireless Devices and. Handsfree Devices.82. USB Connection Videophone Answering a Videophone Call.86. Putting a Videophone Call on Hold.86 All.



<http://www.drupalitalia.org/node/71557>

Before using the H001, check the contents You should also familiarize yourself with Checking the Contents of the Package Manual Japanese Guide Japanese Owner's Guide Japanese It is up to you to purchase a common ACFeliCa mark. TV antenna. Builtin antenna Display Application key. EZ key. Pocket light. Camera lens. Camera start Mail key. Speaker. Infrared port. Center key. Cursor key. Optical sensor. Number keys. Multi key. Microphone Site Viewer and when accessing GPS Leaving the TV antenna extended External connection jack cover Charge indicator LED. Manner key. Down key side. Strap eyelet. Charging terminals. Up key side External connection jack The battery pack that comes with the phone is not fully charged when H001 for the first time. Charging takes about 140 minutes. You should recharge the battery pack whenever the battery level icon Aligning the locking tabs of the You can also Slot. Locking tab. Check the shape of connectors before Note that the configuration of the AC adaptor may be different from that Check the shape of the connectors to ensure they are aligned correctly before Trying to force a connection may damage the connectors. Attach the closed phone to the desktop holder in the This will cause the H001 charge indicator LED to light red, and When charging is completed, the charge indicator LED Fully open the external connection jack cover, check Hold down F for at least The message "Now Loading." will appear Icon. Signal. Strength. Strong. Medium. Weak. Very. Out of. Range Icon. Battery. Level. High. Low. Fully. Discharged. Charging. Hold down F for at least 1.5 seconds. Initial Values. The following are the initial settings of the phone. Lock No. Caller ID. Incm Caller Disp. Profile Blank. Font Size. Input Size. Mail Display. EZweb Display. Address Book. History. Phone No. Slightly Large. Slightly Large The H001 lets you use the numbers and passwords described below. Be sure to take steps so you do not to forget your numbers and Security Code Transfer from a standard phone.

<http://finrusinvest-global.com/images/bosch-ve-rebuild-manual.pdf>



Usage Examples Customer Service Center voice guidance, au website, and EZweb Initial Value Lock No. Usage Examples. For modifying various phone settings. Initial Value Usage Examples. For entering and canceling subscriptions for EZweb fee-based content. Initial Value Premium EZ Password. Initial Value Language. While the standby screen Press 2 English. This selects English as the display Even if English is selected as the display language, schedule and other. Folder names inside of Displays incoming histories. Selects an item. Displays the main menu. Applies an item. Selects EZ News Flash. Gadget. Displays outgoing histories. Displays the address book. Creates a new address Displays the EZ apps menu. Displays the EZweb menu. Email. Cmail hold down for at Displays the Pair Function. Memo. Toggles Answer Memo on Power on hold down for at Inputs text character. Displays Multi Play Window. While the standby screen is Press C to scroll back to the previous screen. Hold down F to return to the standby screen. The following explains the main icons that appear on the standby Signal strength. Battery level. The microSD™ memory card commercial item Tuner on. Unread mail. Current time The date and time are set automatically. Selects the user defined icons such as, calculator. Emission OFF Mode, and Notepad 01, etc. by FeliCa Lock on. Manner Mode on. Ringtone off. Vibrator on. Answer Memo on. EZ News Flash telop. EZ News Flash window The cursor key is described in this manual using There are four initial main menus for H001. Pressing c while the standby screen is displayed displays the main The menu structure depends on the type of the main menu. The table below explains how to assign the Note that the function of each Executes the function on the left. Center soft key c Executes the function on the center. Right soft key %. Executes the function on the right.

<http://flordeyebenes.com/images/bosch-video-multiplexer-manual.pdf>



BT Freestyle 210

User Guide



Pressing the soft key that corresponds to the “SubMenu” at the H001 has two positions Regular open position which the display part In this manual, if the position is not specified, the operation step Regular open position. Wide open position If you force power when your cellphone is It may cause damage. In Wide open position, you can enjoy Television 1Seg, PC Site Viewer. PC Document Viewer, EZ apps in the wide screen. Also, you can set the Function. Description Viewer, press f to start Television 1Seg. TV 1Seg. You can view Television 1Seg on the wide screen. PC Site Viewer. You can enjoy net surfing on the wide screen. None. Displays normal standby screen. You can not make call in Wide open position. If you receive a call in Wide In Wide open position, you can make or answer a call only when flat type switched earphone microphone option or flat type stereo earphone An EZweb subscription is required to use email, EZweb or other EZ EZweb initialization procedure. While the standby screen Press c OK. Wait until the phone connects to the After your automatically Current Phone Number My phone While the standby screen Press 0. Your current phone number and email Email address. Part you can change. Domain name. While the standby screen Press 0 Email Setup. Press 4 Other. Press 1 EAddress. Use j to select the text To input an email address The email address confirmation screen Press j to select “OK,” The message “Update is complete.” If the wrong Security Code is entered three times a The new email address you entered may be registered by someone else Making a Call. While the standby screen is displayed, When calling a standard phone, you need to enter the area Press N. After you finish a call, press F to hang up. Send Methods Outgoing Menu in step 2. To call without any settings Select “Voice Call” in Outgoing Available without any additional application. Ex To call 212123 in the USA Country code USA Phone number Application required. For inquiries, please contact the KDDI Customer Service Center.

Ex To call 212123 in the USA Area code. KDDI international access code. Country code USA. Phone number Press N to answer an incoming call. After you finish a call, press F to hang up. Display for Incoming Calls. If the caller’s name is in your address book, it appears A message appears when the phone number of the ID Unsent The caller’s phone refused to send its Payphone The call is from a payphone. Not Support The call is from a phone that does not Missed Call Notification. The message “Missed Call X” appears on the display if Press c Select To redial a number Incoming Histories. While the standby screen Use j to select the The phone stores up to 50 histories each for the outgoing histories and Onering Calls. A “Onering Call” is an incoming call that rings your phone only once, which If you redial the number The These calls may be Onering. Calls with high possibility. While the standby screen Lamp. Press 1 Incoming. Setup. Call. Press 1 Original. To hear the currently selected ringtone. Use j to select the Press % OK. The ringtone is set. Ringtone Volume. To adjust the ringtone volume, perform steps 1 Use j to select Use j to adjust the Press % OK. STEP v Ringtone volume gradually decreases. Volume during a Call. Hello During a call, use j to You can adjust the earpiece volume level 15 and Max. Turning On Manner Mode. While Manner Mode is set to on, the phone alerts While the standby screen This turns on Manner Mode. The icon Mode is turned on. Turning on Manner Mode also turns on Answer Memo, which is indicated by To turn off Manner Mode, hold

down for at least one second. While the standby screen is displayed, you can press to select the Manner Mode type. Holding down for at least one second while theMemo. While the standby screenC for at least oneThis turns on Answer Memo. The. Memo is turned on.You can use Answer Memos up to 6 memos, and each memo can containTo turn off Answer Memo, hold down C for at least one second.

<http://hellnocancershow.com/wp-content/plugins/formcraft/file-upload/server/content/files/1626c310f0dc36---concrete-buildings-scheme-design-manual.pdf>

The Answering Service Voice Mail can be used to answer the phoneWhen there is a recorded Answer. The message "Answer Memo" appear onSelect "Answer Memo,"Use j to select the. Answer Memo you want toThe Answer Memo plays back. To delete an Answer Memo, press C11 while the standby screenNext press 1 Delete One, and thenYou can use the H001 overseas with global functions. Setting Area. While the standby screenUse a to select "Global. Functions," and thenUse j to select "Area. Setting," and then pressUse j to selectWhile the standby screenUse j to select "Voice. Call," and then pressUse j to select "Dial to. Japan," and then pressInitial settingInput characters using keypad keys 0. The table below shows the characters eachKey. Switch between upper case and lower case of the entered alphabet character. Inputs .,! when no character is entered. Returns to the previous character Back function when entering characters. Inputs a line break after the entered character has been settled. In order to input consecutive characters that are assigned to the same key, press r toAllowable Characters in Your Email AddressA period . or a zero 0 cannot be used as the rst character. Characters and symbols that are shaded in the above table cannot beAddressBook" page 43, and then perform the following steps. Input "mark.". To input "m". To input "a". To input "r". To input "k". Press 6 once. Press 2 once. Press 7 three times. Press 5 twice. Press % SubMenu, andUse j to selectThe following procedure shows how to inputPress R. Use a to select theRegistering an Address. Book. While the standby screenEnter the name, and thenTheTo input text. Use j to selectContinued on the next pageUse j to select the No. Type, and then pressWhen entering the number of a standardUse j to selectIf you do not want to enter an emailEnter the email address,Use j to select the. Email Type, and thenTo input an email address. Press % Reg.Next press 1 Delete One,Book Record. Address. Birthday. Group.

<http://www.drupalitalia.org/node/71559>